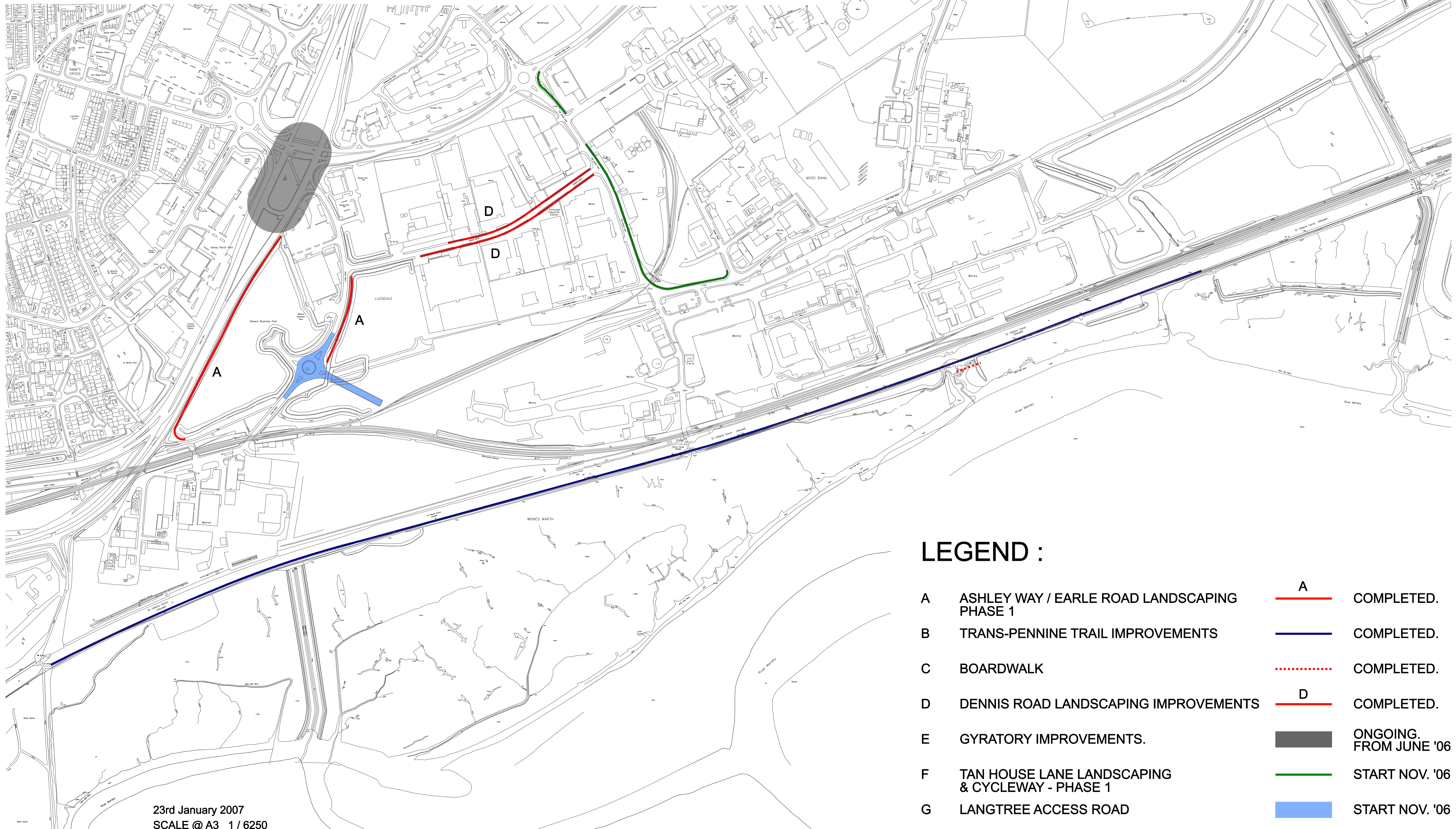









C Halton Borough Council EDZ Infrastructure Projects 2004 to December 2007



LEGEND :

A	ASHLEY WAY / EARLE ROAD LANDSCAPING PHASE 1		COMPLETED.
B	TRANS-PENNINE TRAIL IMPROVEMENTS		COMPLETED.
C	BOARDWALK		COMPLETED.
D	DENNIS ROAD LANDSCAPING IMPROVEMENTS		COMPLETED.
E	GYRATORY IMPROVEMENTS.		ONGOING. FROM JUNE '06
F	TAN HOUSE LANE LANDSCAPING & CYCLEWAY - PHASE 1		START NOV. '06
G	LANGTREE ACCESS ROAD		START NOV. '06